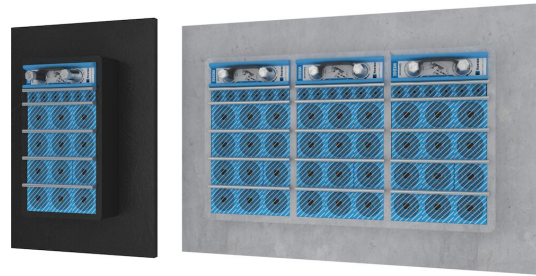




# Roxtec SF EMC 穿隔系统

带用于焊接的金属框架和法兰的 EMC 穿隔系统。

Roxtec SF EMC 是一种确保电磁兼容性的电缆和管道穿隔系统。其穿隔框架可提供不同材质用于单开孔或多种组合开孔。其框架采用 10 毫米厚的金属制成并配有一个法兰于可简化焊接以匹配不精确的开孔。有提供电磁屏蔽的 Roxtec ES 模块与防止传导干扰的 PE 模块可供选择。这些模块适配各种规格的电缆和管道于并可用于在密封系统内提供备用容量。使用 Roxtec EC 检测条来测试 Roxtec BG™ 或 ES 电缆穿隔系统安装的电气性能。



- 易于维护和检查
- 具有内置备用容量

## 产品特性



耐火



水密



气密



IP/UL NEMA



EMI 保护

## 安装结构



金属

## 安装类型



焊接

## 等级和证书

### 火灾

- A 级符合 IMO 2010 FTP 规范
- H 级符合 IMO 2010 FTP 规范 + HC 火灾荷载曲线
- 喷射火符合 ISO 22899-1 和 OTI 95634 标准

### 密封性

- 气体: 2.5 bar 洪灾
- 水: 4 bar 洪灾
- IP 66/67

### 支持

- 电磁屏蔽
- 电位均衡

## 框架尺寸

mm/kg

下方的不同框架只是部分选择。要了解全部的框架和配置请访问 [roxtec.com](https://www.roxtec.com)。

标题	框架开口	密封空间	外部尺寸 W x H x D	开孔尺寸 w x h	重量	产品编号
SF 6x1 ALU	1	120 x 180	260.5 x 358 x 60	201(+15/-15) x 298(+15/-15)	2.9	SFF6000000131
SF 6x2 ALU	2	120 x 180	391 x 358 x 60	332(+15/-15) x 298(+15/-15)	4.2	SFF6000000231
SF 6x3 ALU	3	120 x 180	521.5 x 358 x 60	462(+15/-15) x 298(+15/-15)	6	SFF6000000331
SF 6x1 PRIMED	1	120 x 180	260.5 x 358 x 60	201(+15/-15) x 298(+15/-15)	7.6	SFF6000000112
SF 6x2 PRIMED	2	120 x 180	391 x 358 x 60	332(+15/-15) x 298(+15/-15)	12	SFF6000000212
SF 6x3 PRIMED	3	120 x 180	521.5 x 358 x 60	462(+15/-15) x 298(+15/-15)	16.4	SFF6000000312
SF 6x1 AISI316	1	120 x 180	260.5 x 358 x 60	201(+15/-15) x 298(+15/-15)	8.2	SFF6000000121
SF 6x2 AISI316	2	120 x 180	391 x 358 x 60	332(+15/-15) x 298(+15/-15)	12.2	SFF6000000221
SF 6x3 AISI316	3	120 x 180	521.5 x 358 x 60	462(+15/-15) x 298(+15/-15)	16.6	SFF6000000321



# 密封组件数据

## 密封组件

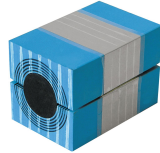
## 配件



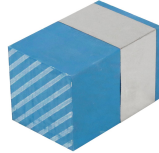
润滑脂



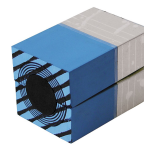
楔形压紧件和楔形压紧套件  
ES 型



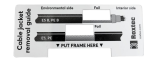
Multidiameter™ 多径  
RM ES 模块



RM ES 盲堵模块



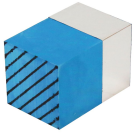
Multidiameter™ 多径  
RM PE 模块



配件 ES 和 BG



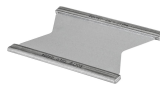
支架工具



RM PE 盲堵模块



楔形压紧件和楔形压紧套件



隔层板



ES 密封套件



焊接工具

如需了解详细信息请访问 [roxtec.com](https://www.roxtec.com)。

The product information provided by Roxtec does not release the purchaser of the Roxtec system, or part thereof, from the obligation to independently determine the suitability of the products for the intended process, installation and/or use. Roxtec gives no guarantee for the Roxtec system or any part thereof and assumes no liability for any loss or damage whatsoever, whether direct, indirect, consequential, loss of profit or otherwise, occurred or caused by the Roxtec systems or installations containing components not manufactured by an authorized manufacturer and/or occurred or caused by the use of the Roxtec system in a manner or for an application other than for which the Roxtec system was designed or intended. Roxtec expressly excludes any implied warranties of merchantability and fitness for a particular purpose and all other express or implied representations and warranties provided by statute or common law. User determines suitability of the Roxtec system for intended use and assumes all risk and liability in connection therewith. In no event shall Roxtec be liable for indirect, consequential, punitive, special, exemplary or incidental damages or losses. The Roxtec products are offered and sold in accordance with the conditions of the Roxtec General Terms of Sales. The latest version of the Roxtec General Terms of Sales can be downloaded from <https://www.roxtec.com/en/about-us/about-roxtec/general-terms-of-sales/>. We reserve the right to make changes to the product and technical information without further notice. Any errors in print or entry are no claims for indemnity. The content of this publication is the property of Roxtec International AB and is protected by copyright. This document was generated on: 2024-04-18